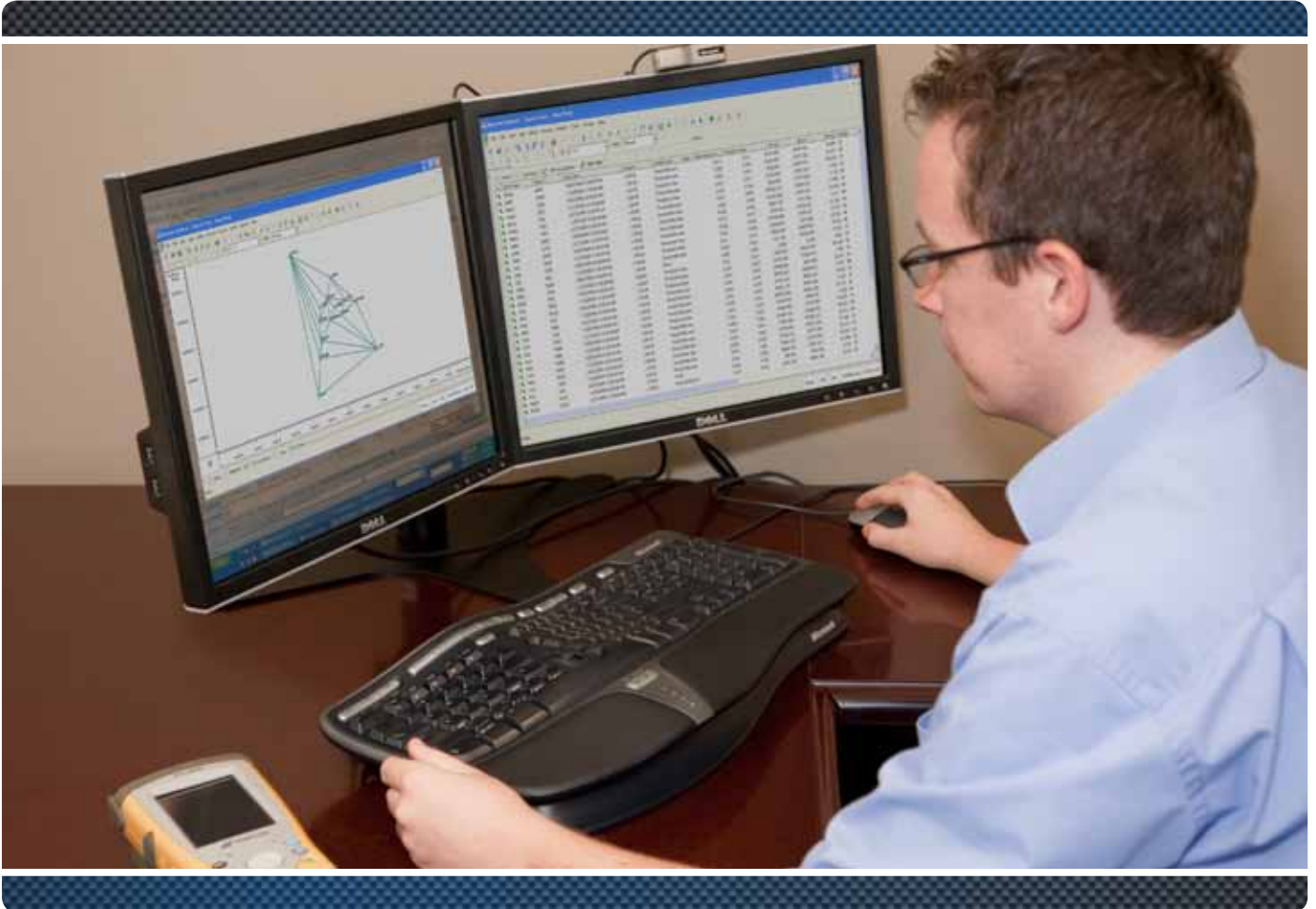


Office Software



- Supports Topcon Survey Instruments and Data Collectors
- Modular Software including Total Station, RTK, Post Processing, GIS, Design, and Imaging
- Easily Customizable for your Workflow
- Multiple Views of your Job including Map, Occupation, Google Earth, Tabular, CAD, and 3D

Topcon Tools Office Software

Topcon Tools is easily customizable to match your workflow. Work the way you want, display what you want to see, and get the reports you need

Import

- Import directly from Topcon receivers, data collectors, total stations, and digital levels
- Import CORS data from the Internet
- Import industry standard formats (ESRI shp, dxf, dgn, LandXML, ASCII)

Post Processing

- Process GPS and GLONASS data
- Process RINEX data from other manufacturer's receivers
- Static and Stop and Go Kinematic processing

Coordinate Systems

- Support for all major datums and projections
- User defined projections
- Localization to ground coordinate systems
- Extensive geoid model support

Background Images

- Support for common image formats (jpeg, tiff, bmp, dwg, MrSid)
- Convert images to new coordinate system including ground coordinates
- Georeference images with least squares fit (jpeg, tiff, bmp)
- Export georeferenced images to data collectors

Quality Control

- Data is constantly monitored
- User defined thresholds
- Easily identify suspect data

Adjustment

- Least squares adjustment of GPS, total station, and level data
- Interactive blunder detection
- 1D, 2D, or 3D adjustments
- Adjustment of geographic, grid, or ground coordinates

Design

- Create road alignments and x-section templates
- Create DTMs and contours
- CAD and 3D views
- Coordinate geometry calculations including surface comparison, inverse, point in direction, intersection, traverse, best fit curve, and best fit alignment



Custom Toolbar

- Put your workflow on a toolbar
- Work sequentially from importing data to final reports
- Save time and increase efficiency



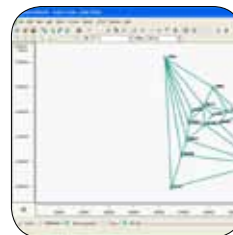
Custom Reports

- HTML, Word, and Excel formats
- Easily customize pre-defined reports
- Easily create new reports



Tabular View

- Display Lat/Lon, grid, or ground coordinates
- Select which columns are displayed
- Use sort function to quickly analyze data

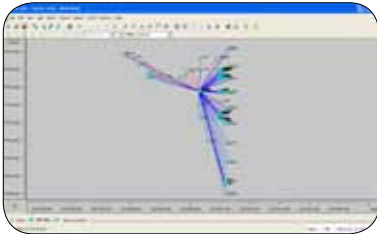


Graphic View

- Control visibility of legend, grid, and labels
- Control the type of observations shown
- Control visibility of background images
- Save graphic view as a jpeg or bmp file
- Set background color

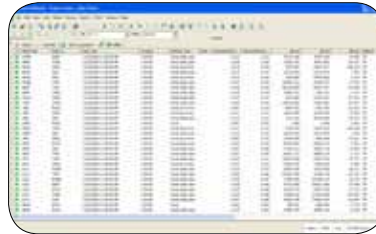


PRIMARY FEATURES



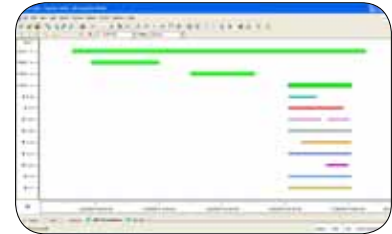
Map View

- Quickly visualize and quality control all your observations
- Select what observations you want to see (static, RTK, total station traverse or sideshots)
- Save graphic view as a jpeg or bmp file
- Graphical selection linked to Tabular View



Tabular View

- Perfect for in depth data analysis
- Sort observations by precision, PDOP, or number of SVs
- Check antenna and rod heights for blunders and easily correct mistakes
- Easily view any notes entered by the field crew



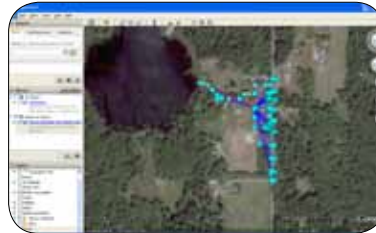
Occupation View

- View all your observations on a timeline
- Review and edit individual satellite tracking
- UTC or local time



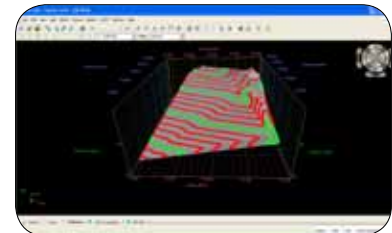
CAD View

- View your observations as points and lines
- Quality control and edit your field work before sending it to the draftsman
- Add points and lines



Google Earth View

- See where your job is located
- Generate a Google Earth kml file to email to clients or the office
- Synchronize view with your Topcon Tools job



3D View

- View your job in three dimensions
- DTM and contour quality control
- Drape imagery over surfaces

Reports

- Default reports for Points, GPS Observations, Total Station Observations, Quality Control, Adjustment, Localization, and Loop Closures
- Include graphic views in your reports
- Versatile and easy to use report configuration

Export

- Export to industry standard formats (ESRI shp, dxf, dwg, LandXML, and ASCII)
- Export Google Earth kml format
- Export directly to Topcon data collectors



SYSTEM REQUIREMENTS

Operating System	Microsoft Windows® XP/Vista/7
Processor	Compatible with Intel® Pentium® 1 GHz or faster
RAM	512MB of RAM (1GB recommended)
Hard-disk Space	300MB of available hard-disk space
Monitor	17" or larger monitor recommended, displaying 256 colors

For more specification information:
www.topconpositioning.com/topcontools

Topcon TotalCare

This online resource comes with real live people ready to help. Get expert training from Topcon University's large collection of online materials, and expert help directly from Topcon Technical Support.

Access software and firmware updates, current publications, and guidance from the experts at Topcon all right from your computer or mobile device.

Please visit the TotalCare website to learn more.
topcontotalcare.com



7400 National Drive • Livermore • CA 94550
 (925) 245-8300

Specifications subject to change without notice. ©2013 Topcon Corporation
 All rights reserved. P/N: 7010-0629 Rev. E TF Printed in U.S.A. 3/13

The *Bluetooth*® word mark and logos are registered trademarks owned by Bluetooth SIG, Inc. and any use of such marks by Topcon is under license. Other trademarks and trade names are those of their respective owners.

SOFTWARE

Topcon Tools Companion Software

A family of software solutions that streamlines the workflow for surveyors, contractors, engineers and mapping professionals.

TopSURV

Field controller software with a superior graphical user interface and fast performance

- Large Graphical User Interface (GUI)
- Intuitive User Interface
- Graphical Stakeout
- Map View data collection
- Fast job management and storage
- Single Source Solution
- Advanced Roding Available
- Available for Windows® CE, Windows Mobile®, handhelds or on-board



MAGNET Office Topo

A CAD product capable of processing and reducing TopSURV field data into a drafting environment that produces final drawings and models for surveyors, engineers, and machine operators.

- Full sub-division layout
- Contour and DTM creation, Volumes, Automated Pad Design
- Title Blocks, Symbols, and Linetypes
- Optional Command Line interface



Your local Authorized Topcon dealer is:

